

REVISIONS			
REV	DESCRIPTION	DATE	APPROVED

D

□

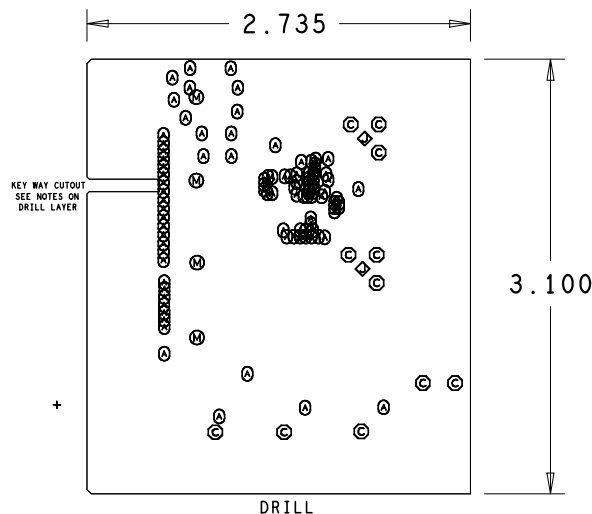
C

0

B

**A**

**A**



## DRILL CHART: TOP to BOTTOM

ALL UNITS ARE IN MILS

FIGURE	SIZE	PLATED	QTY
Ⓐ	14.0	PLATED	97
Ⓑ	37.0	PLATED	11
Ⓒ	93.0	PLATED	2
Ⓓ	110.0	PLATED	4

NOTES :

1. THIS BOARD IS RoHS COMPLIANT.
2. PRINTED WIRING BOARD DESIGN AND ACCEPTANCE CRITERIA SHALL BE IAW WITH THE REQUIREMENTS OF IPC-D-275 AND IPC-A-600.
3. MATERIAL: FR4 (RoHS COMPLIANT), 2 OZ COPPER.
4. APPLY SOLDER MASK, BOTH SIDES OVER BARE COPPER IAW IPC-SM-840. CLASS 2 (LPI) (GREEN MASK).
5. ALL PATTERNS ARE VIEWED FROM THE PRIMARY SIDE LOOKING THROUGH THE BOARD.
6. UNLESS OTHERWISE SPECIFIED ALL HOLE DIAMETERS ARE AFTER PLATING.
7. APPLY SILKSCREEN USING WHITE NON-CONDUCTIVE EPOXY BASED INK.
8. PWB MUST BE 100% ELECTRICALLY TESTED FOR SHORTS AND CONTINUITY. USE NETLIST PROVIDED EVB-ER31XXDI\_1PC356.IPC IAW IPC-D-356.
9. MARK DATE CODE AND MANUFACTURES IDENTIFICATION ON SOLDER SIDE PER IPC-6011 AND IPC-6012.
10. TOLERANCE ON ALL DRILL HOLES SHALL BE IAW IPC-D-2221 & 2222 UNLESS OTHERWISE SPECIFIED.
11. PIN 9 OF P3 EDGE CONNECTOR IS INTENTIONALLY CUTOFF FOR A KEY WAY.

<div>PART TO BE FREE OF BURRS AND SHARP EDGES COMMERCIAL TOLERANCES APPLY TO STOCK SIZES MANUFACTURING TOLERANCES PER 900000 DIMENSIONALITY PER 900000 SCREW THREADS PER ANSI Y14.8 ANNOTATIONS PER MIL-STD-105 LOGIC SYMBOLS PER IEEE STD 91A ELECTRONICS AND TOLERANCES PER ANSI Y14.9 ELECTRICAL AND ELECTRONIC DIAGRAM PER ANSI Y14.9 GRAPHIC SYMBOLS FOR ELECTRICAL AND ELECTRONIC DIAGRAM PER IEEE STD 91A ELECTRICAL AND ELECTRONIC REFERENCE SYMBOLS PER IEEE STD 91A WELDING SYMBOLS PER ANSI/AWS A5.4 INTERNET DRAWING LAW AND-STD-100</div>		<div>UNLESS OTHERWISE SPECIFIED DIMENSIONS ARE IN INCHES AND INCLUDE APPLIED FINISH TOLERANCES 2 PLACE DIGIT 1 PLACE DIGIT ANGLES ± .0000 ± .0000 ± .0000</div>		<div>CONTRACT NO.</div>		<div>PRINTED WIRING BOARD, EVAL EVB-ER31XDD1</div>		<div>SIZE DWG NO. SCALE 09349</div>		<div>SHEET 1 OF 1</div>	
				<div>DWG BY CHK BY ENGR ELCTR ENGR PROJ ENGR MFG ENGR RELIABILITY CONFIGURATION APPROVAL - DFTB QA APPROVAL SFC ENGR</div>							
<div>PART NO. NEXT ASSY APPLICATION</div>											